



Aspirant
Consulting Group



SOUDERTON

BOROUGH



Aspirant
Consulting Group



Our Borough

Souderton Borough is a welcoming and community-driven municipality located in Montgomery County, Pennsylvania. Known for its walkable downtown, small-town charm, and strong civic pride, Souderton offers a unique environment that blends tradition with thoughtful growth.

Encompassing just over 1 square mile, Souderton is home to approximately 7,000 residents who value safety, neighborliness, and a high quality of life. The Borough is part of the highly regarded Souderton Area School District and benefits from convenient access to major transportation routes such as Route 113, Route 309, and the Pennsylvania Turnpike. Its location provides quick connections to nearby regional hubs including Lansdale, Allentown, and Philadelphia.

Souderton's downtown has undergone a successful revitalization in recent years and serves as the heart of the community, featuring locally owned businesses, restaurants, arts venues, and gathering spaces. The Borough hosts seasonal festivals, farmers markets, and community events that bring residents together and strengthen local identity.

Souderton Borough presents an excellent opportunity for a forward-thinking law enforcement leader who is committed to fostering community trust, promoting professional excellence, and leading a department in a close-knit, engaged environment. It's a place where police leadership can truly make an impact—not just within the department, but throughout the community.



Aspirant
Consulting Group



Our Police Department

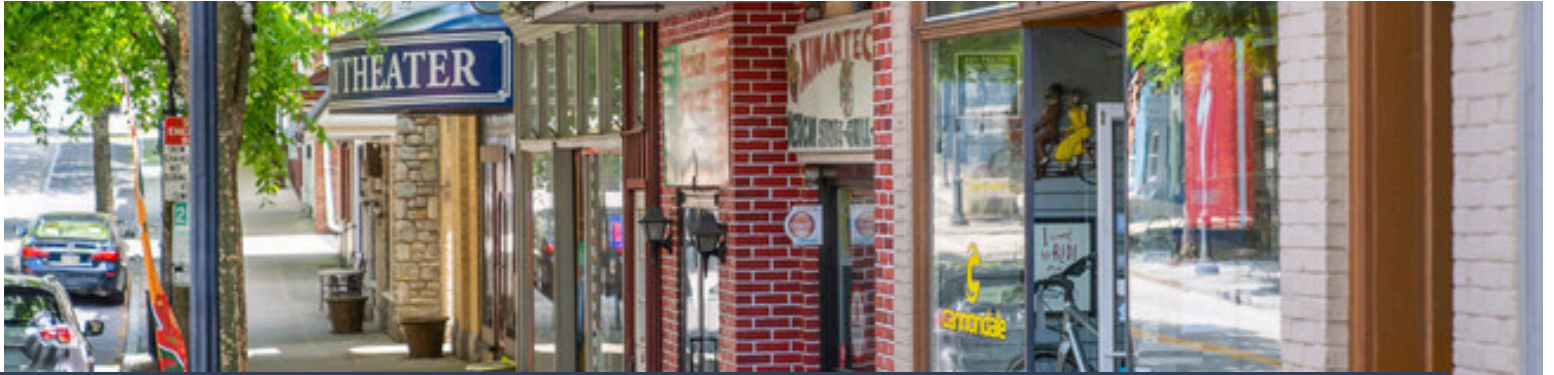
The Souderton Borough Police Department is a professional, community-focused law enforcement agency dedicated to serving and protecting the residents and businesses of Souderton. The department operates with a team of 10 sworn officers, including the Chief of Police and a dedicated Detective.

Despite its modest size, the department maintains a strong presence in the community and delivers comprehensive policing services. Officers are cross-trained in a variety of areas and take pride in providing proactive patrol, criminal investigations, traffic enforcement, and community outreach. The department embraces a community policing philosophy and works closely with residents, local businesses, and regional partners to maintain a safe and welcoming environment.

The department benefits from strong support from Borough leadership and the community at large, making it an ideal setting for a Chief of Police who values collaboration, trust-building, and service-driven leadership. As the department continues to evolve alongside the community it serves, there are meaningful opportunities for innovation, modernization, and continued professional development.



Aspirant
Consulting Group



Leading Souderton Forward

Souderton Borough is seeking a Chief of Police who brings confident leadership, integrity, and a steady presence to a department poised for its next chapter. This is a unique opportunity for a proven law enforcement professional to shape culture, align priorities, and lead with intention — in a borough that values both tradition and progress.

As Chief, you will have the opportunity to refine and elevate internal operations, strengthen community relationships, and set clear expectations across the organization. You'll work closely with Borough leadership to align public safety efforts with the broader goals of the community, ensuring the department remains responsive, trusted, and professional in all it does. This role calls for a leader who is as comfortable in front of residents as they are within the walls of the department — someone who listens well, speaks with clarity, and follows through with purpose.

You are a leader who:

- **Engages the Community with Purpose:** You understand that trust is earned. Through visibility, responsiveness, and honest communication, you build authentic relationships with residents, businesses, and local institutions to reinforce a culture of shared responsibility for public safety.
- **Sets the Tone Internally:** You lead with composure and credibility, establishing a high bar for conduct and professionalism while supporting your team's growth. You know when to listen and when to act, and you foster a healthy, cohesive work environment by setting clear boundaries, reinforcing accountability, and encouraging constructive dialogue.



Aspirant
Consulting Group



Leading Souderton Forward

- **Develops Future Leaders:** You believe strong leadership is sustained from within. You create pathways for officers to grow, mentor the next generation of leaders, and build a department that can thrive long after your tenure, one that reflects the best of what law enforcement can be.
- **Leads with Clarity and Consistency:** You bring focus to the mission. Whether navigating internal dynamics or collaborating with Borough officials, you provide a stabilizing presence rooted in fairness, professionalism, and a commitment to doing what's right.
- **Embraces Structure and Innovation:** You understand the value of sound operations and data-informed decision-making. Your ability to implement practical strategies, streamline workflows, and align resources allows the department to function efficiently while staying ahead of evolving public safety needs.

If you are a poised, principled leader ready to make a lasting impact in a department and a community that is ready for meaningful progress, we invite you to consider leading Souderton Borough Police Department into its next chapter.

THANK YOU

Applications are due by May 18, 2025 by 11:59 pm. Interested candidates should prepare a cover letter and resume, which must be submitted to info@aspirantllc.com. This is a unique opportunity to lead with purpose and serve a community that values steady leadership, professionalism, and meaningful engagement.